



American Steam

INSTALLATION INSTRUCTIONS

For AST, AS, ASD & ASD-A series generators and CC, CCTT & CCP control kits

*****CUSTOMER WARNINGS*****

- DO NOT USE THIS PRODUCT UNLESS YOU HAVE CONSULTED YOUR DOCTOR AND RECEIVED WRITTEN PERMISSION TO DO SO. USE OF THIS PRODUCT MAY BE HAZARDOUS TO YOUR HEALTH.
- STEAM IS HOT! DO NOT TOUCH OR GO NEAR THE STEAM HEAD FROM THE TIME THE UNIT IS "ON", UP TO ONE HOUR FROM THE TIME THE UNIT IS OFF. SEVERE BURNS WILL OCCUR IF YOU COME IN CONTACT WITH THE STEAM HEAD OR STEAM EMITTING FROM THE STEAM HEAD.
- NEVER ATTEMPT TO FILL AROMA THERAPY RESERVOIR ON THE STEAM HEAD WHEN UNIT IS IN THE "ON" POSITION. SEVERE BURNS WILL OCCUR.
- DO NOT USE AMERICAN STEAM AROMA THERAPY OILS OR SKIN CARE PRODUCTS OR ANY PRODUCT IN CONJUNCTION WITH YOUR AMERICAN STEAM UNIT WITHOUT CONSULTING WITH YOUR ALLERGIST OR DOCTOR BEFORE USE. THESE PRODUCTS MAY BE HAZARDOUS TO YOUR HEALTH.
- YOUR SHOWER MAY BE A SLIP AND FALL HAZARD. CHECK WITH YOUR CONTRACTOR OR FLOORING MANUFACTURER REGARDING THE SAFE USE OF YOUR FLOORING IN A STEAM APPLICATION. SLIPPING AND FALLING INTO THE STEAM HEAD ITSELF OR INTO THE STREAM OF STEAM EMITTING FROM THE STEAM HEAD WILL CAUSE SERIOUS BURNS OR PHYSICAL INJURY.
- DO NOT USE STEAM ROOM WHILE UNDER THE INFLUENCE OF ALCOHOL OR DRUGS, AS THIS CAN BE HAZARDOUS TO YOUR HEALTH.
- IF YOU ARE FEELING UNCOMFORTABLE, DIZZY, FAINT, OR STARTING TO FALL ASLEEP, IMMEDIATELY EXIT THE STEAM ROOM.
- DO NOT USE STEAM ROOM IF YOU ARE UNDER THE AGE OF 16 UNLESS SUPERVISED BY AN ADULT.
- AMERICAN STEAM GENERATORS ARE FOR INDOOR USE ONLY. THEY SHOULD NEVER BE LOCATED OUTSIDE THE HOME.
- AMERICAN STEAM GENERATORS ARE NOT TO BE USED FOR SPACE HEATING PURPOSES.
- FOR SAFETY, SMOOTH OPERATION PRACTICE AND LIABILITY. IF YOU ARE A PLUMBER/INSTALLER, PLEASE ENSURE THIS OWNERS MANUAL & WARRANTY INFORMATION IS IN THE OWNER'S POSSESSION WITH SPECIFIC DELEGATION FOR THE PURPOSE OF COMPLETELY FAMILIARIZING ANY USERS WITH THIS OR ANY AMERICAN STEAM PRODUCT.
- FAILURE TO FOLLOW INSTALLATION INSTRUCTIONS SPECIFICALLY WILL CAUSE THE WARRANTY TO BE VOID.

Note: For better technical assistance and before contacting Technical Support, please have this model number and serial number ready

PLACE SERIAL # HERE

TECHNICAL AND WARRANTY SUPPORT ONLY: 1-800-585-STEAM

FOR ALL OTHER CUSTOMER SUPPORT PLEASE CONTACT YOUR DEALER



American Steam

AST/AS 5-YEAR & ASD/ASD-A LIFETIME FACTORY WARRANTY

AMERICAN STEAM will repair the specific failure on your AMERICAN STEAM Steambath generator manufactured after June 1, 2005 at its factory for 5 years maximum after purchase date for AS/AST generators and Lifetime for ASD/ASD-A generators. All expenses incurred due to the removal of and shipping to and from the factory and reinstallation of American Steam products are the responsibility of the owner.

AST/AS 1-YEAR & ASD/ASD-A 2-YEAR IN-HOME WARRANTY

AMERICAN STEAM will warranty all parts found to have a manufacturing defect on your AMERICAN STEAM generator manufactured after June 1, 2005 and labor required to replace those parts for a period of 1-year on AS/AST and 2-years on ASD/ASD-A generators. At the end of your 1-year or 2-year in-home warranty, see FACTORY WARRANTY.

WARRANTY EXCLUSIONS

1. This service warranty does not cover: Removal and reinstallation charges associated with the warranty repairs; shipping charges to or from AMERICAN STEAM; parts or product damaged in shipment; parts or product damaged during installation; malfunction of equipment due to improper installation or installation not according to manufacturer specifications and/or installation instructions; installations not observing National/Local Plumbing and/or Electrical codes; any unit which has been altered; parts or product installed in a manner that does not permit proper access to service; any residential unit used in a non-residential or commercial application; any discoloration of steam heads and control due to staining, scratching or use of harsh or abrasive cleaning chemicals; calcification build-up due to water conditions and/or improper maintenance; damage caused in the event of accident, neglect, misuse, vandalism, fire, lightning, power surge, earthquake, flood or any other peril or damage to structure or other acts of God. Any repair or installation modification that is subject to the above exclusion shall be paid by the owner at the current parts and labor rate in effect at the time work is done. Additional labor or parts, which may be necessary or recommended, will be charged, with the owner's permission, at the current rate in effect at the time work is done. AMERICAN STEAM will not be liable in any way for any contingent liability or incidental or consequential damages resulting from the sale, delivery, installation or use of its products. Users are responsible for suitability of the products for their application. Damage resulting from improper specification or application or other operating conditions beyond AMERICAN STEAM's control is not under warranty.
2. AMERICAN STEAM will exercise reasonable efforts in rendering service under this warranty, but shall not be liable for any damage arising out of delays; this warranty only covers the repair and/or replacement of AMERICAN STEAM product as specified by the warranty.
3. This warranty gives you specific legal rights and you may also have other rights, which may vary, from state to state. Determination of rights under this warranty is in accordance with the laws of California. Any dispute under the warranty must be submitted and resolved by arbitration in California.
4. AMERICAN STEAM does not guarantee that a local service person will be available for in-home service. Unit may have to be removed and reinstalled at owner's expense. It is the responsibility of the buyer to file a claim with the carrier/carriers for any product that has shipping damage to or from AMERICAN STEAM. A RMA (Return Merchandise Authorization) must be obtained from the factory and used on any correspondence or packages sent to the factory.

TERMINATION

This warranty will be terminated by AMERICAN STEAM for the following reasons: Improper installation or use; residential unit used in a non-residential or commercial application; service to equipment by unauthorized personnel; installation that does not permit proper access for service; non-payment of repairs not covered under warranty; modification to any part of the unit; use of non-AMERICAN STEAM repair parts.

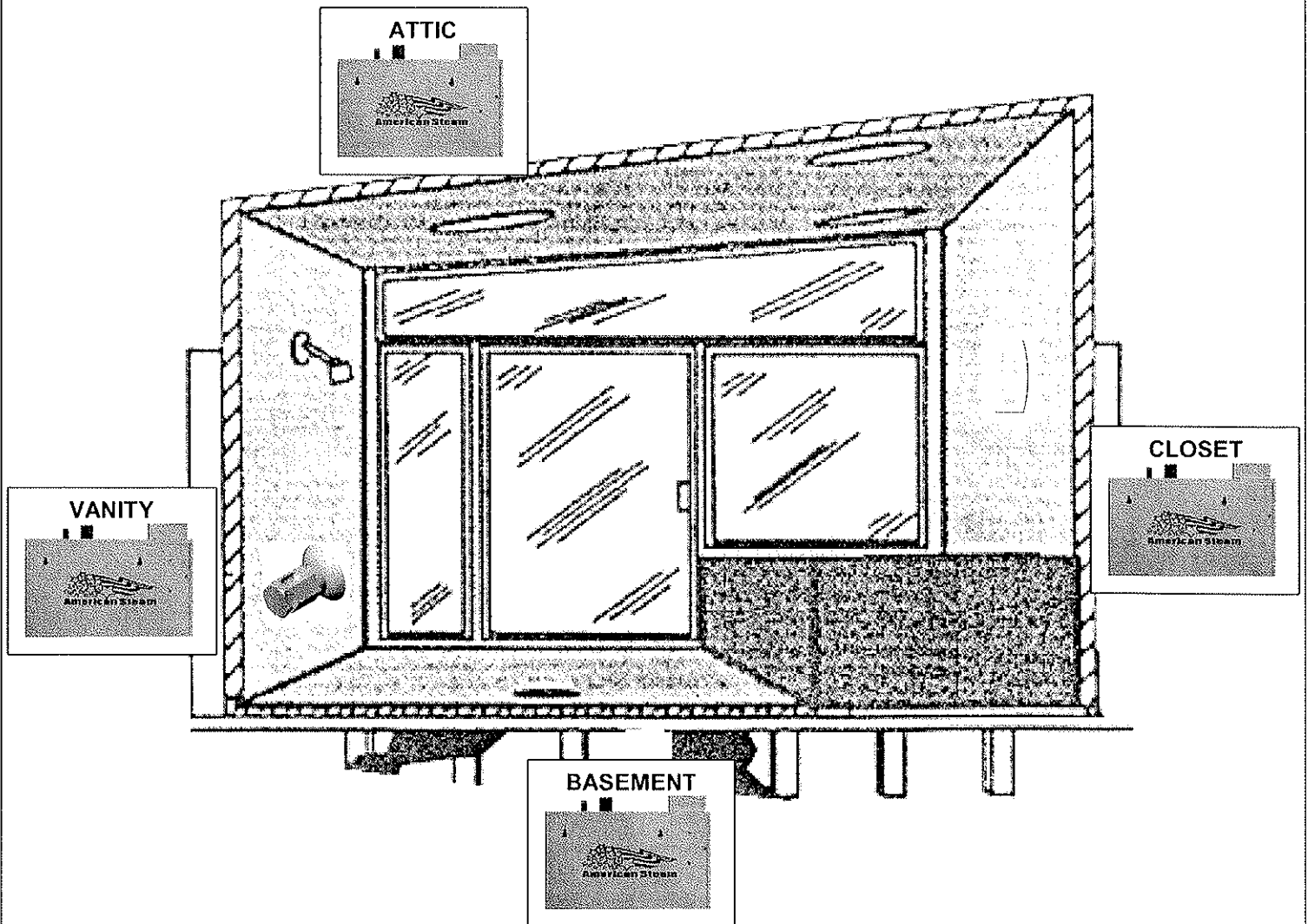
SIZING YOU STEAM ROOM

1. Calculate the total volume of the enclosure. (Length x Width x Height = Total Volume).
2. Using the Volume total, multiply by the number to the right of your shower wall material shown below.

Example: 7 ft. long x 4 ft. wide x 7 ft. high = 196 cubic feet
 196 cubic ft. x 1.65 (marble) = 323.4 cubic ft. = Model ASD-300 generator.

NOTE: Add 10% for every foot exceeding 7 ft. in ceiling height. Add 10% for every exterior outside wall.

| | |
|---|-----------|
| ▪ Fiberglass, Cultured Marble | .65 |
| ▪ Corian | No Change |
| ▪ Ceramic tile on waterproof sheetrock, cement bed or mortar bed | No Change |
| ▪ All glass tile, glass block walls | 1.35 |
| ▪ Natural stone tiles 3/8" to 1/2" (marble, travertine, slate, granite, etc.) | 1.65 |
| ▪ Natural stone tiles on cement bed or mortar bed | 1.65 |
| ▪ Natural stone slab 3/4" to 1" | 1.85 |



Various options for the American Steam generator locations.
 (Refer to page 5 for proper detailed installation instructions)

Generator Installation Instructions

Tools Needed

- ✓ Pipe wrench
- ✓ Tubing cutter
- ✓ Wire cutters or wire strippers
- ✓ Adjustable wrench
- ✓ Screwdrivers (Phillips & regular)
- ✓ Solder & flux
- ✓ 1" & 1-1/16" masonry drill bits
- ✓ Drill motor
- ✓ Propane torch
- ✓ Other tools as required

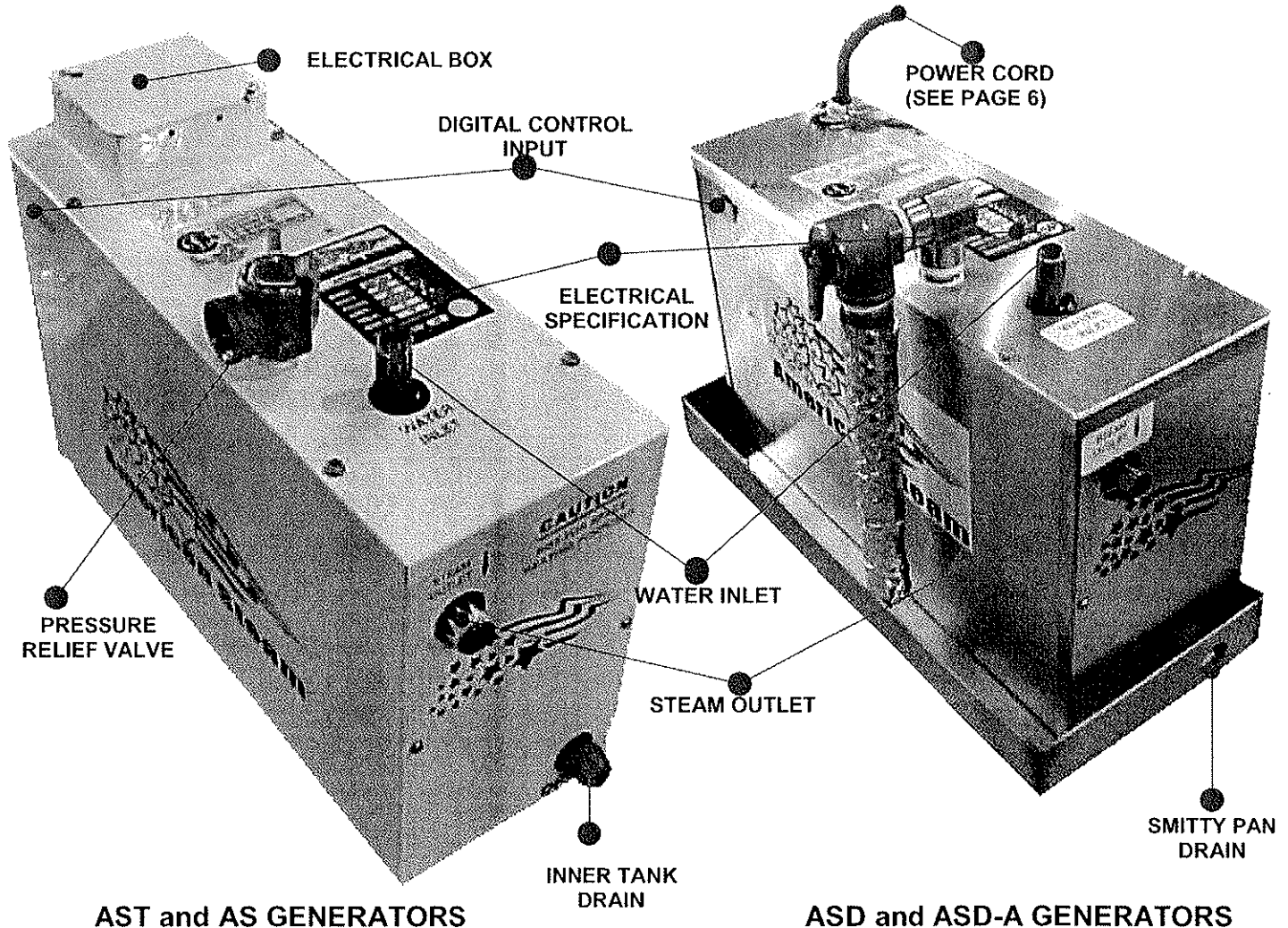
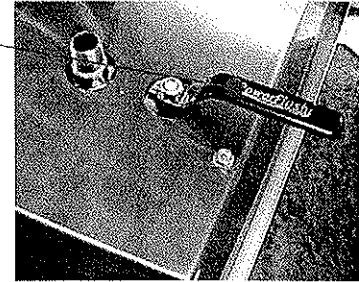
Parts Enclosed

- ✓ Steam generator
- ✓ Control kit (purchased separately)
- ✓ 50 foot control cord
- ✓ Steam head (purchased separately)
- ✓ Installation instructions

Materials Needed

- ✓ Brass ball valve
- ✓ Pipe compound
- ✓ In-line filter (recommended)
- ✓ Wire (Hardwired units only)
- ✓ Wire cap nuts (Hardwired units only)
- ✓ Flex conduit (Hardwired units only)
- ✓ Brass or copper tee connection & plug
- ✓ Copper tubing or pipe with various fittings
- ✓ Silicone

MANUAL POWERFLUSH VALVE (ASD MODEL ONLY)



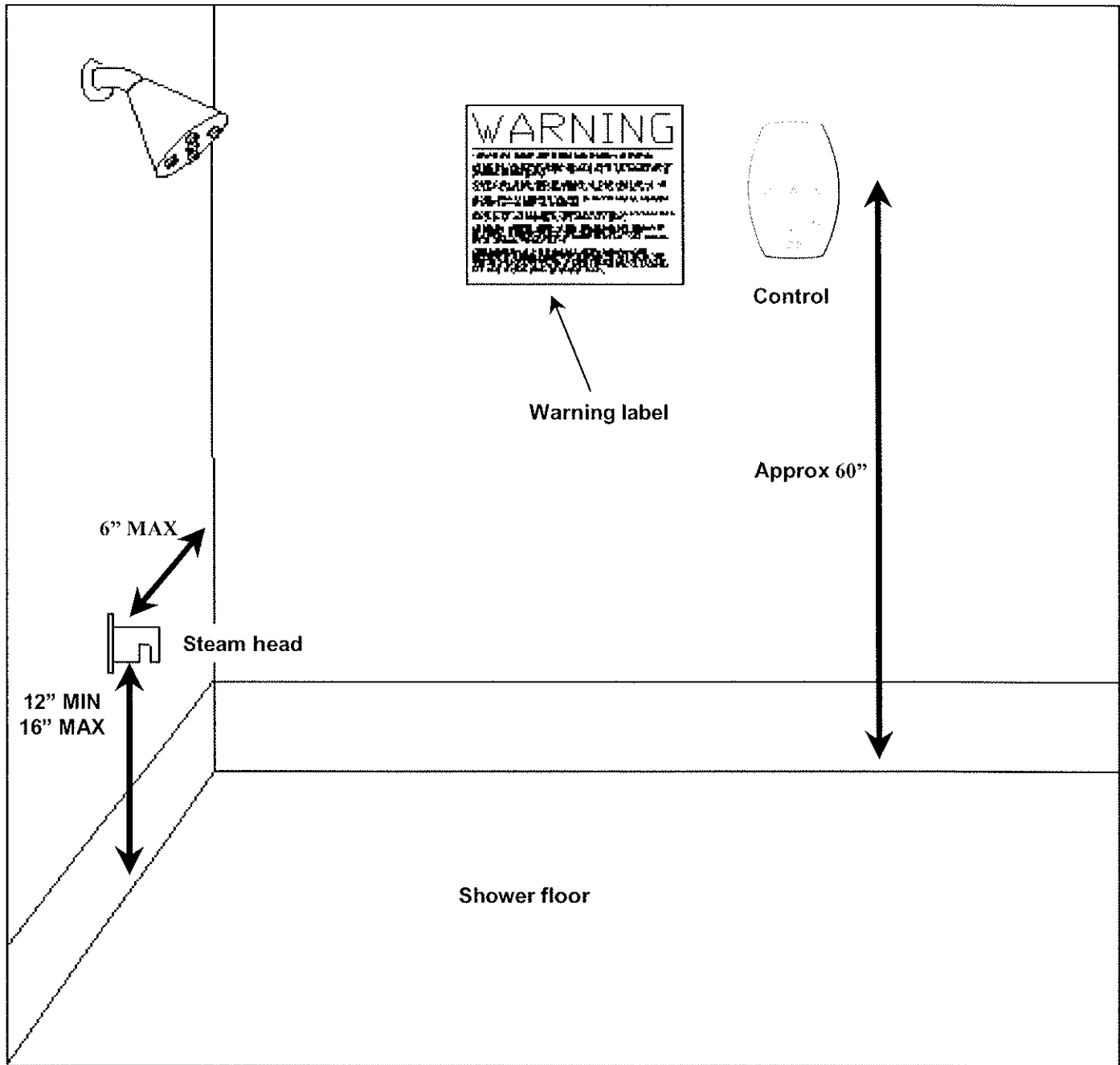
Requirements for Proper Installation

1. Ensure the enclosure to be used is vapor-proof. It should have a vapor-proof door that seals well so the steam does not escape. Make sure the wall, ceiling and the floor materials are okay to use with steam and hot condensation that any steam generator produces.
2. Use copper or brass fittings only. **(NEVER USE GALVANIZED OR IRON PIPE FITTINGS)**
3. MAXIMUM INLET WATER PRESSURE NOT TO EXCEED 70 P.S.I.
4. The water inlet and steam outlet use a brass union for easy installation. Install the drain/spill pan under the unit for AS and AST models. ASD and ASD-A models come pre-equipped with a drain pan. All drain pans must be plumbed to an approved drain.
5. **The generator must be upright, accessible and on a level surface** with **all** connections in the appropriate position; water inlet on top, steam outlet in front. Access panels must be unobstructed and allow for easy access.
6. Unit may be installed up to 50 feet away from shower area, in a dry well-ventilated area.
7. If unit is installed in a basement or attic, ensure that the unit and plumbing is well insulated and will not freeze.
8. **Do not** plumb a trap in the steam line or plumb the pressure relief valve into the steam line. Plumbing the pressure relief valve into the steam line can be hazardous, should the steam outlet be capped off or obstructed.
9. Pitch steam line back towards generator and avoid perfectly level plumbed steam lines.
10. Before connecting water line to the generator, flush water line into a five-gallon pail to remove any silt or other materials that may be in the line. An in-line water filter is also recommended.
11. Make sure water is turned on to the unit before operating the unit.

Water Inlet Installation

1. The generator must be mounted on a level surface able to support a minimum of 50 pounds.
2. MAXIMUM INLET WATER PRESSURE TO BE NO LESS THAN 15 P.S.I. AND NOT TO EXCEED 70 P.S.I.
3. Connect a tee to the cold water line. Install copper pipe to the tee. An in-line filter is recommended.
4. Install a brass shut-off valve on the water inlet line in an accessible area prior to the recommended in-line water filter.
5. Before making the last connection to the 3/8" flex line going to the unit, flush the water line into a five-gallon pail to remove any silt or other materials that may be in the line.
6. Make the final connection and turn on water. All American Steam generators are equipped with an automatic water fill system. The water will stop after unit is filled.
7. The steam line can run up, down, or horizontal; but cannot run down and then up. If it does, a steam trap may be produced at the low point blocking the flow of steam. Insulate the steam outlet piping if it exceeds 10 feet or is exposed to cold areas. NOTE: Use only steam rated insulation (225f min).

!!!NOTICE !!!



YOU MUST ATTACH STATIC CLING USER WARNING LABEL IN THE SHOWER NEXT TO THE CONTROL UPON COMPLETION OF INSTALLATION.

!!!! IMPORTANT !!!!

LOCATE THE STEAM HEAD 12" OFF THE SHOWER FLOOR OR BATHTUB RIM AND 6" FROM ANY CORNER. STEAMHEAD IS TO BE MOUNTED AS FAR AS POSSIBLE FROM TYPICAL BATHING POSITION (SEATED OR STANDING) AND AS FAR FROM CONTROL AS POSSIBLE WHILE MAINTAINING APPROXIMATELY A 60" CONTROL HEIGHT.

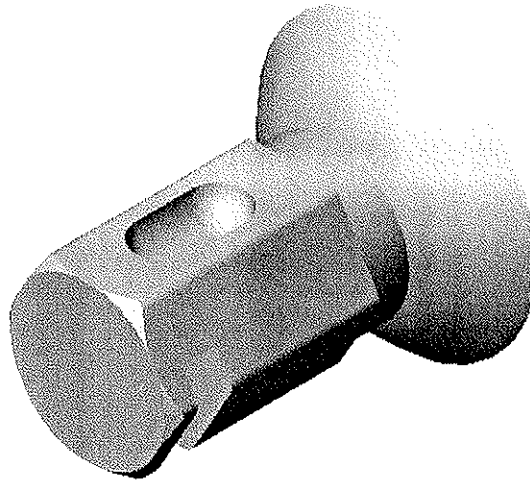
STEAM HEAD INSTALLATION

Parts Enclosed

- ✓ Deluxe steam head
- ✓ Escutcheon

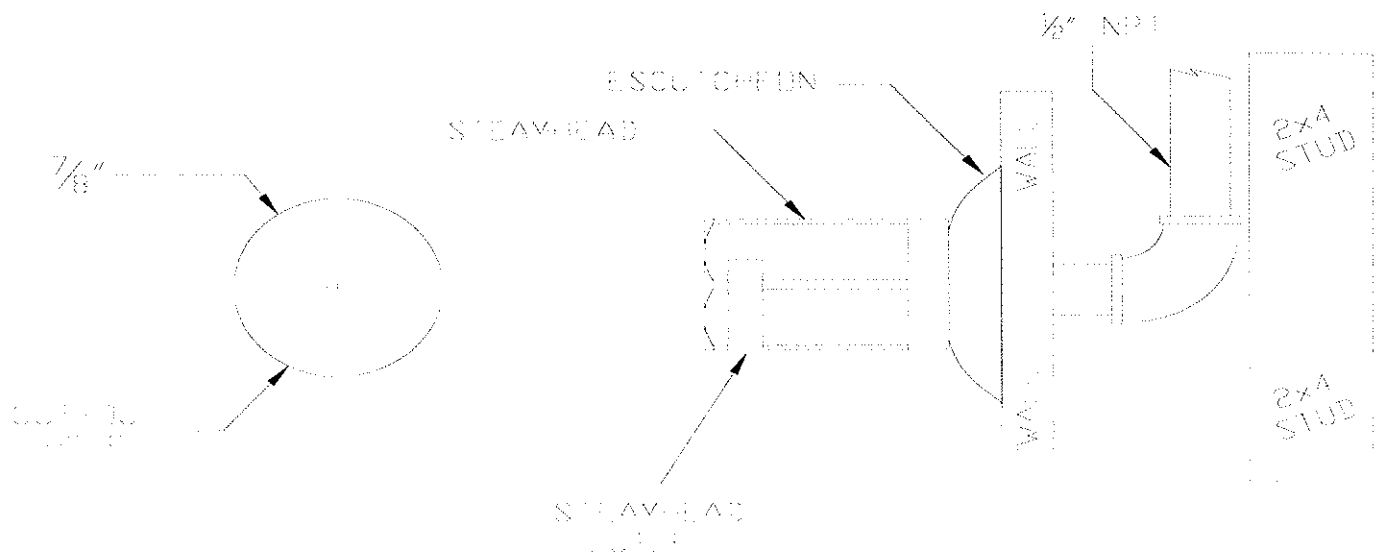
Tools Needed

- ✓ Pipe wrench
- ✓ 7/8" cutting tool
- ✓ Silicone gun
- ✓ Other tools as required



1. **IMPORTANT NOTE! LOCATE THE STEAM HEAD 12" OFF THE SHOWER FLOOR OR BATHTUB RIM AND 6" FROM ANY CORNER. STEAM HEAD IS TO BE MOUNTED FAR AS POSSIBLE FROM TYPICAL BATHING POSITION (SEATED OR STANDING) AND AS FAR FROM CONTROL AS POSSIBLE WHILE MAINTAINING APPROXIMATELY A 60" CONTROL HEIGHT.**
2. Drill a 7/8" diameter hole in the shower wall or wall above the bathtub for the steam outlet line.
3. Connect 1/2" F.I.P. copper pipe or copper tubing and 1/2" brass union onto the steam outlet. Run a 1/2" copper pipe from the union to the 7/8" hole in wall.
4. Attach the steam head and escutcheon to the copper pipe. **CAUTION: Do not obstruct the steam line with any shut-off valves, plugs or caps. ALL American Steam generators are designed to build NO PRESSURE.**
5. The steam line can run up, down, or horizontal; but **cannot run down and then up**. If it does, a steam trap will be produced at the low point blocking the flow of steam. Insulate the steam outlet piping if the piping run exceeds 10 feet or is exposed to cold areas. **NOTE: Use steam rated insulation (225f min).**

WARNING: Avoid contact with steam head! It will burn you. Avoid direct contact with the steam coming out of the steam head! It is extremely hot! It will burn you!



Electrical Installation

American Steam requires that a licensed electrician perform all electrical work per National/Local Electrical Codes.

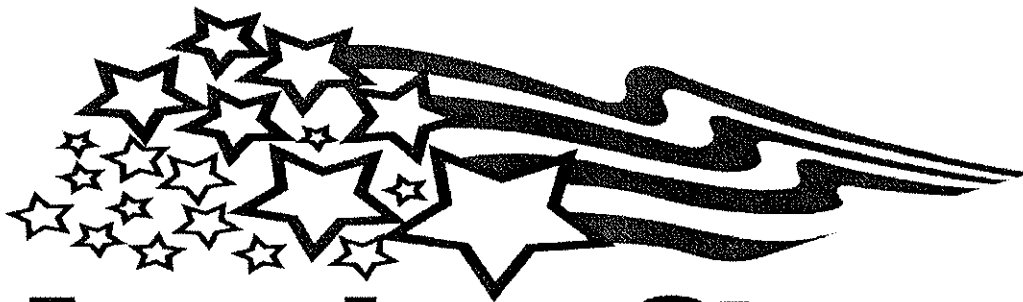
| Generator Model | Phase | Wire Gauge | Breaker Size | Cubic Feet MAX | AMP draw@ 240VAC | KW | HARD WIRED OR NEMA AC Receptacle |
|-----------------|-------|------------|--------------|----------------|------------------|-----|----------------------------------|
| ASD-100A | 1 | 10 | 20 | 60 | 17 | 3.5 | 6-20R |
| ASD-150A | 1 | 10 | 30 | 90 | 30 | 6 | 10-30R |
| ASD-300A | 1 | 8 | 40 | 155 | 40 | 8 | 10-50R |
| ASD-450A | 1 | 8 | 50 | 305 | 50 | 10 | 10-50R |
| ASD-575A | 1 | 6 | 60 | 455 | 60 | 12 | N/A hard wired 50+AMPS |
| ASD-100 | 1 | 10 | 20 | 60 | 17 | 3.5 | 6-20R |
| ASD-150 | 1 | 10 | 30 | 90 | 30 | 6 | 10-30R |
| ASD-300 | 1 | 8 | 40 | 155 | 40 | 8 | 10-50R |
| ASD-450 | 1 | 8 | 50 | 305 | 50 | 10 | 10-50R |
| ASD-575 | 1 | 6 | 60 | 455 | 60 | 12 | N/A hard wired 50+AMPS |
| AS-100 | 1 | 10 | 20 | 60 | 17 | 3.5 | N/A hard wired |
| AS-150 | 1 | 10 | 30 | 90 | 30 | 6 | N/A hard wired |
| AS-300 | 1 | 8 | 40 | 155 | 40 | 8 | N/A hard wired |
| AS-450 | 1 | 8 | 50 | 305 | 50 | 10 | N/A hard wired |
| AS-575 | 1 | 6 | 60 | 455 | 60 | 12 | N/A hard wired |
| AST-100 | 1 | 10 | 20 | 60 | 17 | 3.5 | N/A hard wired |
| AST-150 | 1 | 10 | 30 | 90 | 30 | 6 | N/A hard wired |
| AST-300 | 1 | 8 | 40 | 155 | 40 | 8 | N/A hard wired |
| AST-450 | 1 | 8 | 50 | 305 | 50 | 10 | N/A hard wired |
| AST-575 | 1 | 6 | 60 | 455 | 60 | 12 | N/A hard wired |

Wire sizes recommended by NEC (2002 Version). Minimum wire temperature rating 90°C. Type THHN.

NOTE: USE COPPER WIRE ONLY.

1. Turn off all electricity to the working area at the main breaker panel!
2. For models AS-100, AS-150, AS-300, AS-450, AS-575, AST-100, AST-150, AST-300, AST-450, AST-575, ASD-575 and ASD-A-575, connect 230-volt AC electrical lines to wires labeled 1 & 2 in junction box on the generator and an approved ground to the green safety grounding wire.
3. For models ASD-100, ASD-150, ASD-300, ASD-450, ASD-A-100, ASD-A-150, ASD-A-300 and ASD-A-450, plug the attached power cord into the appropriate NEMA AC receptacle.

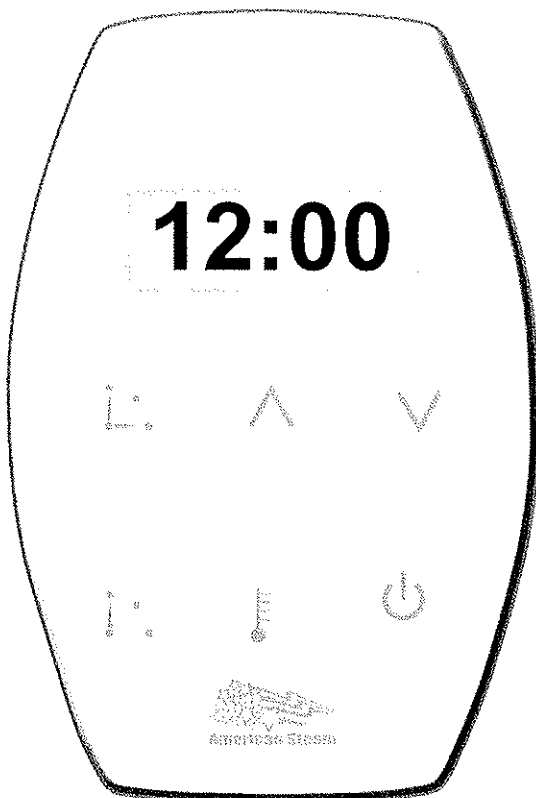




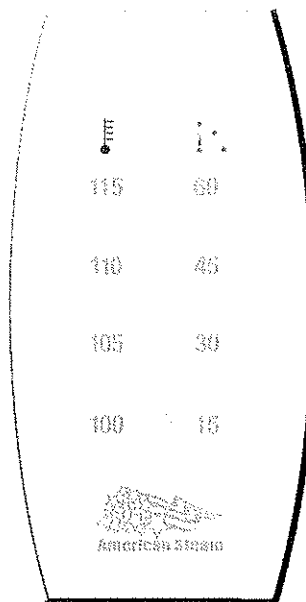
American Steam

Control and steam head instructions for CCP, CCTT, CC and basic timer controls

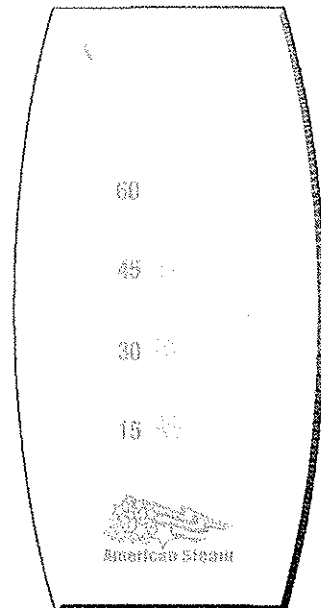
INSTALLATION/OPERATION INSTRUCTIONS



CCP-



CCTT-



CC-

PC-Polished Chrome/ PB-Polished Brass/SN-Satin Nickel/PN-Polished Nickel/ORB-Oil Rubbed Bronze

IMPORTANT: For safety, smooth operation practice and liability: If you are a plumber/installer, please ENSURE this owners manual & warranty information is in the owner's possession with specific delegation for the purpose of completely familiarizing any users with this or any American Steam product.

NOTE: For better assistance, before contacting Customer Service for technical support, please have the model number and serial number (including all numbers and letters) located on the unit.

CONTROL INSTALLATION

1. The American Steam control **MUST** be located inside the shower area.
2. Position the control 4 to 6 feet from the floor inside the steam room. Drill one 1-inch hole in the wall.
3. Bring the control wire from the generator through the 1-1/16 inch hole. Carefully connect the wire to the controls connector. DO NOT pinch, nail, wedge etc. the control cable. Any damage to the control cable will result in the control not working properly. If the control is not installed immediately, protect the end connectors with tape or some other kind of shielding material.
4. Carefully connect the other end of the lead wire to the generator before turning power on to the generator.
5. Turn on both water and power to the generator.
6. Test the control to ensure it is properly connected. If any technical problems arise, contact customer support.
7. **THESE STEPS MUST BE TAKEN OR YOUR WARRANTY WILL BE VOID.** Coat the entire control back with supplied waterproof silicone. Completely seal the control to the wall so moisture does not get behind it. Place the control on the wall pressing firmly. You may need to tape the control into place until the silicone dries. Be careful not to harm the wall/control with the tape. (See Figure 1.) Let dry for 24 hours before using steam bath.

Failure to follow installation instructions specifically will cause the warranty to be void!

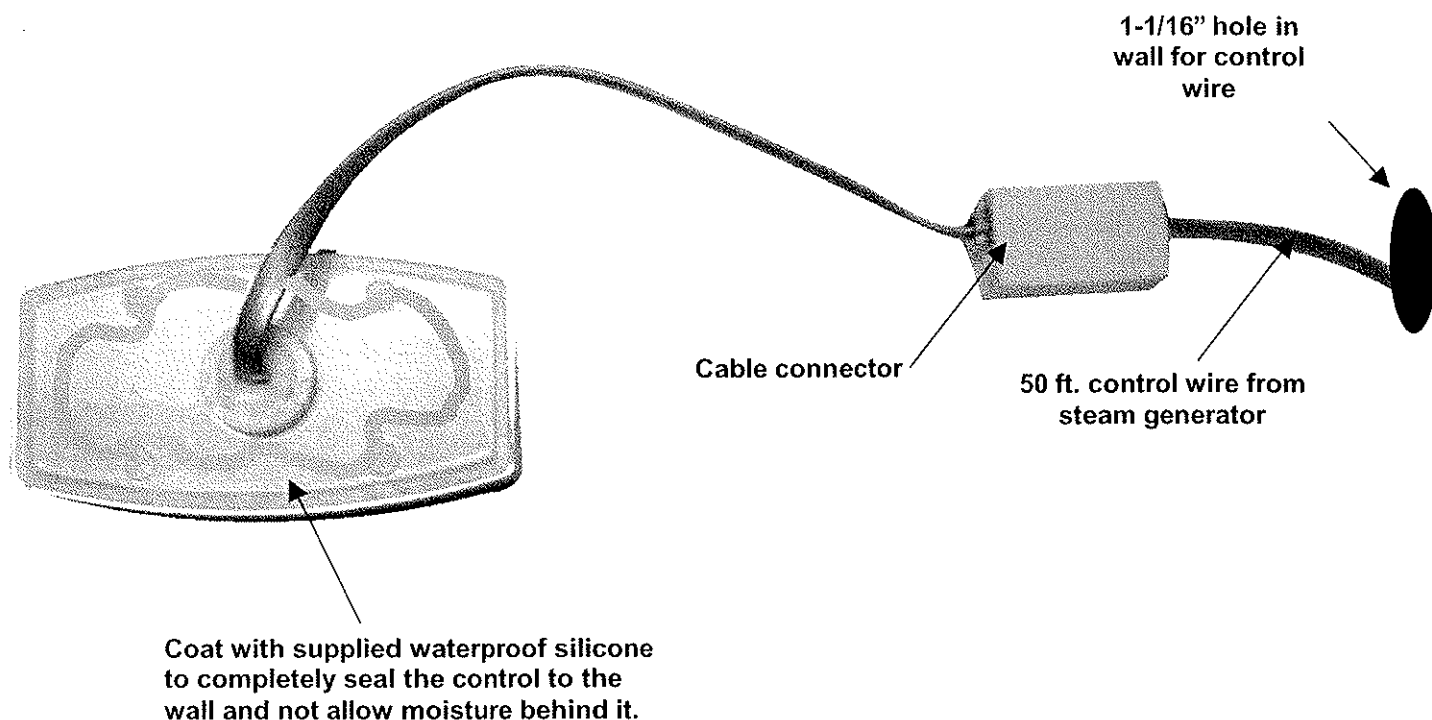


Figure 1

Clear Choice Plus (CCP) Installation /Operation Instructions

1. **To set the clock time**, turn the control on. In the display you will see "ON". Press and release the clock button. The time will display and will flash. Using the up/down buttons to adjust the time to the current time of day. After 4 seconds of no button pushes the time will be stored as time of day. Press the on/off button again to turn control off. (See Figure 2.)
2. **To set the length of the steam shower session**, turn unit on by pressing the on/off button, then press the timer button. The display will show the set time in minutes and will flash. Using the up/down arrows set the session time to your desired length. After 4 seconds of no button pushes, the new setting will be set and stored for your next steam bath session. (See Figure 3.)

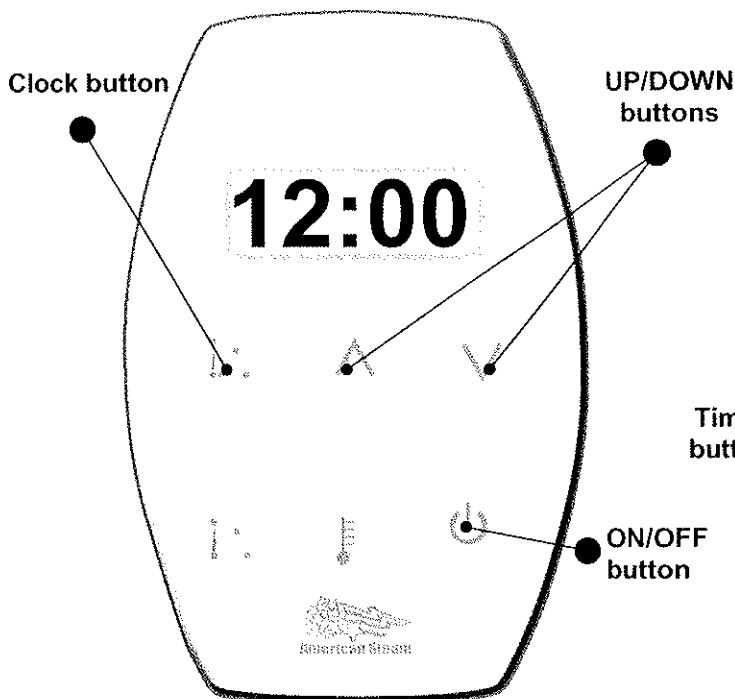


Figure 2

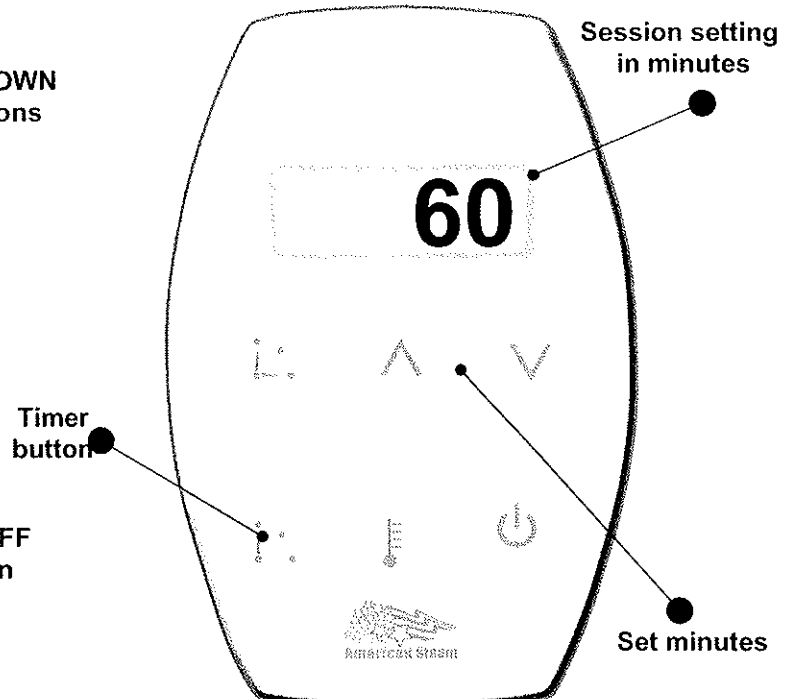


Figure 3

3. **To set the temperature** turn unit on, then press the temperature button. The display will flash showing the current set point for the temperature. Using the up and down buttons adjust the temperature to your preferred setting. After 4 seconds of no button pushes the new temperature setting will be set and stored for the next steam bath session, and the current room temperature will display on the control. To change between Fahrenheit and Centigrade, press the temperature button. The display will flash, then press and **HOLD** the temperature button for 4 seconds then release. The display will change from F to C or vice versa. (See figure 4.)

POWER FLUSH Operation *(not available on AST and AS models)*

4. **Auto POWER FLUSH. (ASD-A units only)** To activate the inner tank cleaning system, press and hold Up and Down buttons at the same time for 5 seconds, **PFLU** should appear on display, then release. POWER FLUSH will begin in three minutes and the complete cycle will last 45 minutes. Auto POWER FLUSH session is 45 minutes / 3-minute wait / 5-minute water flush during cycle, heater is always on. (See Figure 5.)
5. **Manual POWER FLUSH. (ASD units only)** Turn on the control and set the timer to 45 minutes. Open the POWER FLUSH valve located on top of the generator for 5-7 minutes, then close. Allow generator to finish the 45-minute session. Use of POWER FLUSH will vary with local water conditions. Speak with your plumber regarding hard water conditions in your area. American Steam recommends one POWER FLUSH cycle per week.

WARNING: FOR SAFETY, IT IS IMPORTANT THAT NO ONE IS INSIDE THE SHOWER ENCLOSURE DURING THE POWER FLUSH CLEANING CYCLE. IT IS ALSO IMPORTANT THAT THE ENCLOSURE DOOR BE CLOSED DURING THIS CYCLE. SEVERE BURNS WILL OCCUR IF YOU COME IN CONTACT WITH THE STEAM HEAD, PURGING HOT WATER OR STEAM EMITTING FROM THE STEAM HEAD.

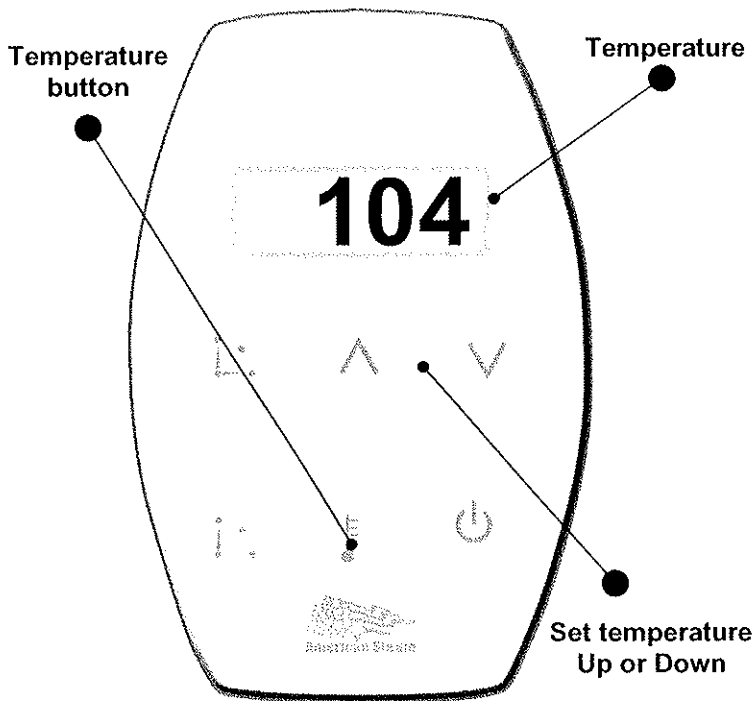


Figure 4

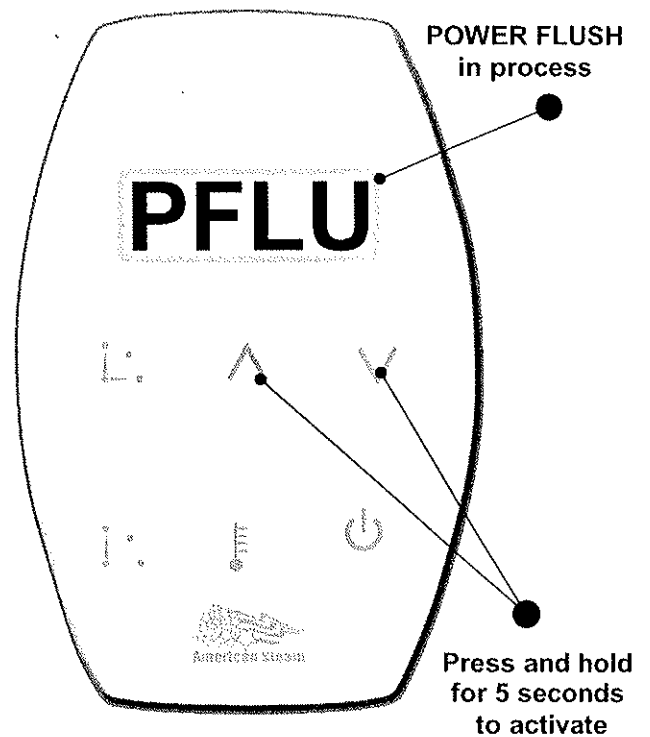
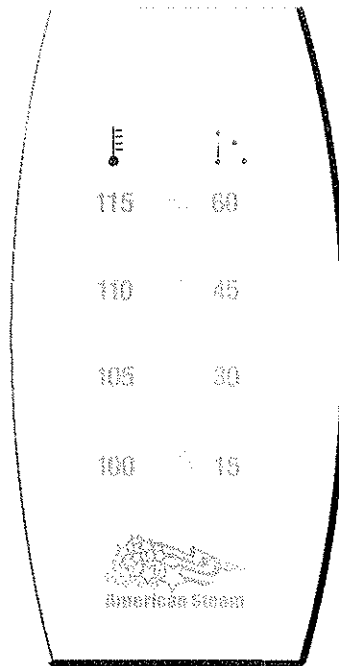


Figure 5

Clear Choice Time/Temp (CCTT) Installation /Operation Instructions

Note: GREEN LED's indicate the time and the RED LED's indicate the temperature.



- 1. Starting Your Steam Bath.** Press the "Control Button" momentarily to activate your steam bath session. Your control will come from the factory with a default setting of 60 minutes at 100°F (to change these settings see steps 2 and 3) once the button is pressed you will see a green LED appear indicating the time to be set. Four seconds will pass and a red LED will appear indicating the temperature to be set. (See Figure 6.)
- 2.** The CCTT control has a built-in memory and will remember your time and temperature setting for the next session.
- 3. Changing Session Time.** While the green LED is still flashing (within 4 seconds), momentarily press the "Control Button". Repeat until the green LED associated with your desired time starts flashing. Once the desired time is flashing, wait 4 seconds and the time will be accepted by the control. (See Figure 7.)
- 4. Changing Session Temperature.** After the time has been selected, the red 100° LED will automatically start flashing. If this is the desired temperature, wait 4 seconds and that temperature will be accepted by the control and the generator will start. If a different temperature is desired, momentarily press the "Control Button". Repeat until the red LED associated with your desired temperature starts flashing. Once the desired temperature is flashing wait 4 seconds and setting will be accepted by the control and the generator will start. (See Figure 8.)

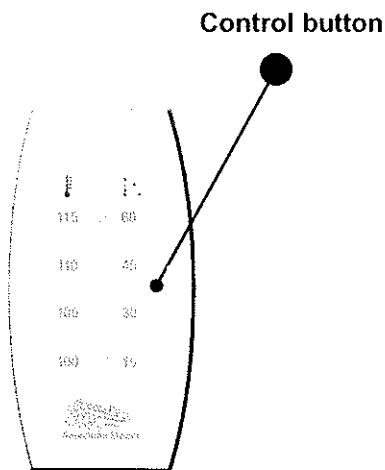


Figure 6

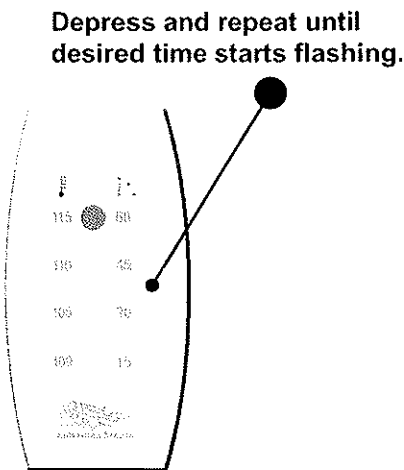


Figure 7

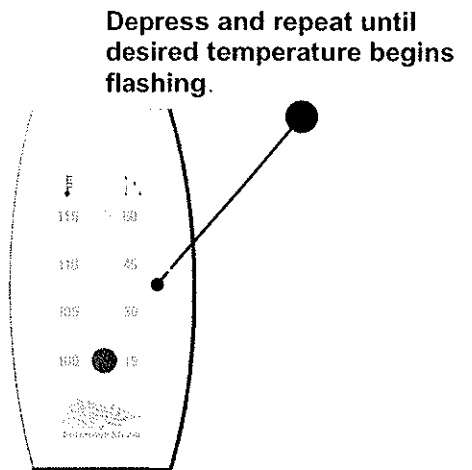


Figure 8

5. **Manual Shut Off.** To manually shut off the generator before the selected time has expired, press the “Control Button” once. The LED's will go off and the generator will turn off. (See Figure 9.)
6. **Diagnostic Feature.** The CCTT control has a unique diagnostic feature. If there is a malfunction within the unit, it will alert you. The red 115° LED will flash when the low water sensor is activated, the red 110° LED will flash if the shower area exceeds 135°F, and the red 100° LED will flash if the control button becomes stuck. If any of these diagnostics happen the unit will shut down and lock out all user interfaces. To reset the unit, power will need to be reset at the breaker. (See Figure 10.)

POWER FLUSH Operation (not available on AST and AS models)

7. **Auto POWER FLUSH. (ASD-A units only)** (If option is ordered on the steam generator) To activate the inner tank cleaning system, press “STEAM” to turn on the unit then press the button again and hold until all four LED's flash, then release. POWER FLUSH will begin in two minutes and the complete cycle will last 45 minutes, (See figure 11.)
8. **Manual POWER FLUSH. (ASD units only)** Press the button on the control to power up and set the timer to 45 minutes. Open the POWER FLUSH valve located on top of the generator for 5-7 minutes, then close. Allow generator to finish the 45-minute session. Use of POWER FLUSH will vary with local water conditions. Speak with your plumber regarding hard water conditions in your area. American Steam recommends one POWER FLUSH cycle per week.

WARNING: FOR SAFETY, IT IS IMPORTANT THAT NO ONE IS INSIDE THE SHOWER ENCLOSURE DURING THE POWER FLUSH CLEANING CYCLE. IT IS ALSO IMPORTANT THAT THE ENCLOSURE DOOR BE CLOSED DURING THIS CYCLE. SEVERE BURNS WILL OCCUR IF YOU COME IN CONTACT WITH THE STEAM HEAD, PURGING HOT WATER OR STEAM EMITTING FROM THE STEAM HEAD.

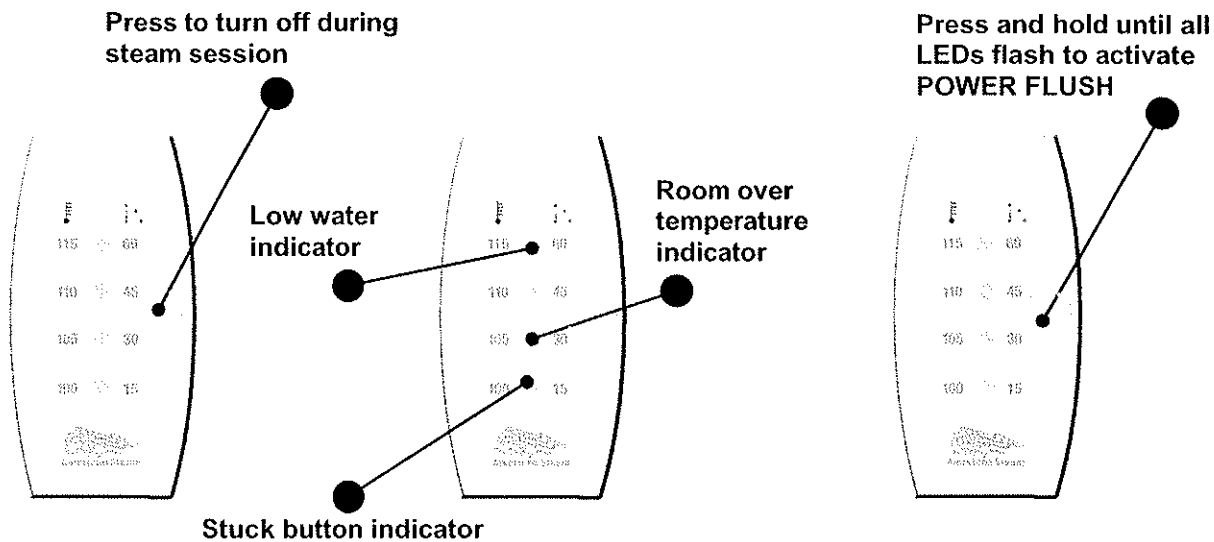
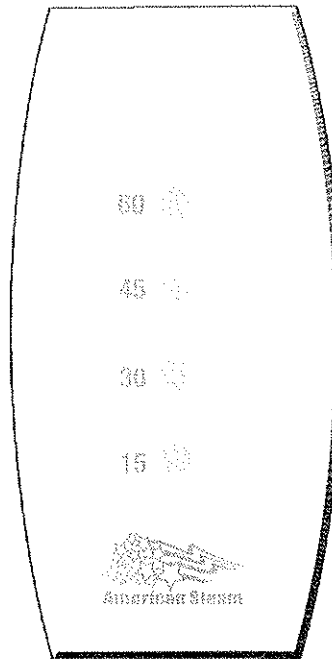


Figure 9

Figure 10

Figure 11

Clear Choice (CC) Installation /Operation Instructions



1. **Starting your steam bath.** Press "STEAM" button to activate your steam bath session. 60 minute LED will light up. (See Figure 12.)
2. **Changing session time.** Press "STEAM" button again and repeat until your desired time session lights up. (See Figure 13.)
3. **Pause feature.** Press "STEAM" button and hold until LED time light flashes. Release. Light will flash while system is in pause mode. Press "STEAM" button again to restart session. (See Figure 14.)

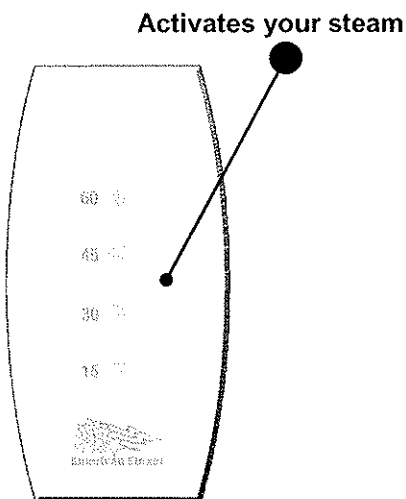


Figure 12

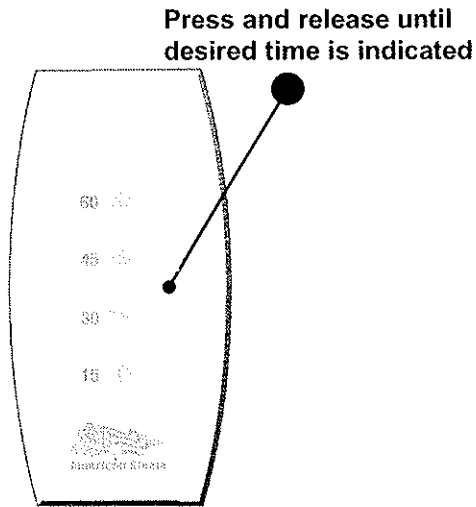


Figure 13

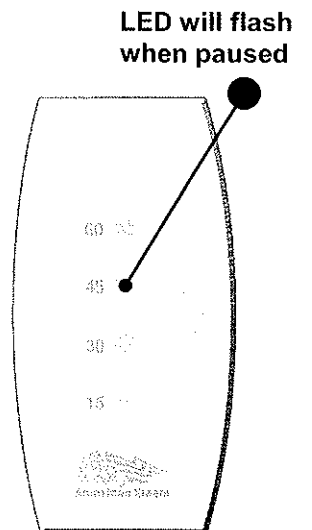


Figure 14

4. **Setting memory.** Set the desired time you want to set to memory. Press and hold the "STEAM" button. LED will flash, continue to hold until light stops flashing and remains solid. Turn timer off by pressing "STEAM" button. Wait 15 seconds and restart your unit. Your desired time will illuminate. (See Figure 15.)
5. **Diagnostic feature.** The CC control has a unique diagnostic feature. If there is a malfunction within the unit, it will alert you. The 15-minute light flashes when the control button is stuck. The 60-minute light flashes when the low water sensor is activated. (See Figure 16.)

POWER FLUSH Operation (*not available on AST and AS models*)

6. **Auto POWER FLUSH. (ASD-A units only)** To activate the inner tank cleaning system, press "STEAM" to turn on the unit then press and hold the "STEAM" button until all four LED's flash, then release. POWER FLUSH will begin in two minutes and the complete cycle will last 45 minutes. (See Figure 17.)
7. **Manual POWER FLUSH. (ASD units only)** Press the button on the control to power up and set the timer to 45 minutes. Open the POWER FLUSH valve located on top of the generator for 5-7 minutes, then close. Allow generator to finish the 45-minute session. Use of POWER FLUSH will vary with local water conditions. Speak with your plumber regarding hard water conditions in your area. American Steam recommends one POWER FLUSH cycle per week.

WARNING: FOR SAFETY, IT IS IMPORTANT THAT NO ONE IS INSIDE THE SHOWER ENCLOSURE DURING THE POWER FLUSH CLEANING CYCLE. IT IS ALSO IMPORTANT THAT THE ENCLOSURE DOOR BE CLOSED DURING THIS CYCLE. SEVERE BURNS WILL OCCUR IF YOU COME IN CONTACT WITH THE STEAM HEAD, PURGING HOT WATER OR STEAM EMITTING FROM THE STEAM HEAD.

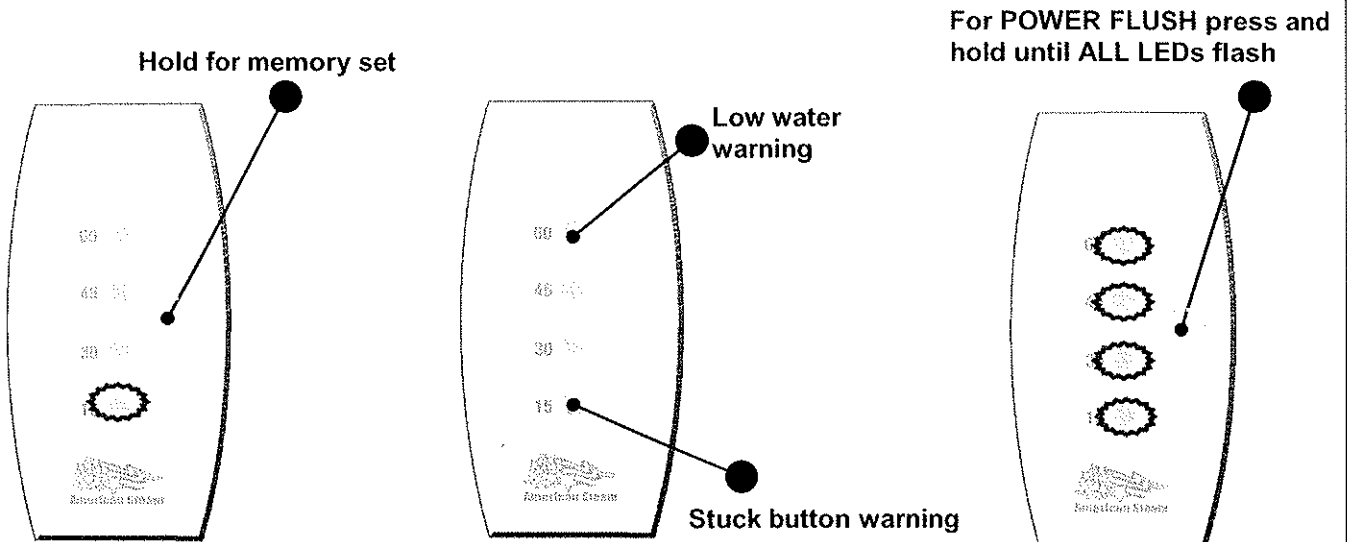


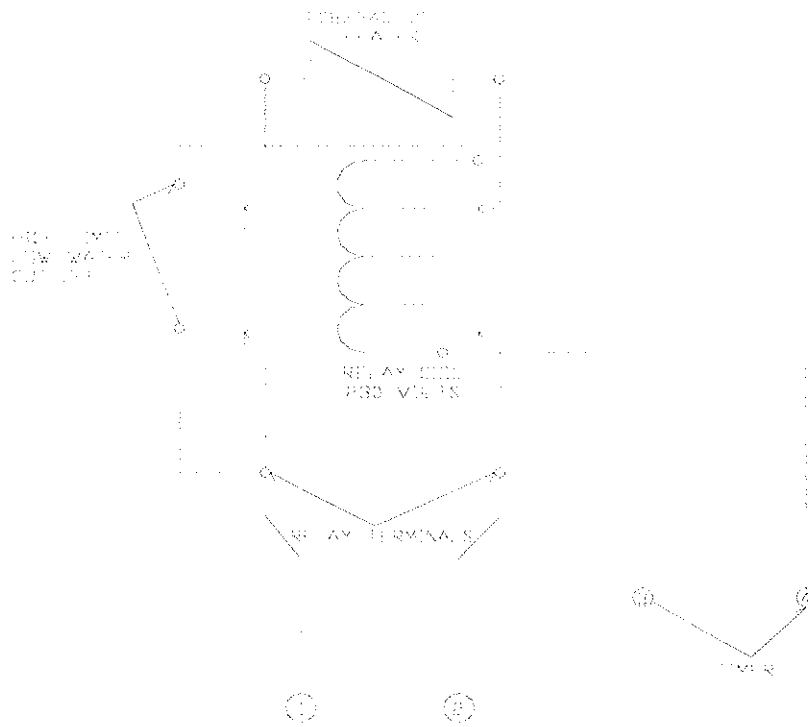
Figure 15

Figure 16

Figure 17

Mechanical Timer Installation (AST Model)

1. Connect 230-volt AC electrical lines to wires labeled 1 & 2, connect wires labeled 3 & 4 to manual timer in junction box on generator, (see Figure 18). Do not install a GFI (Ground Fault Interrupter) to this machine, (per article 210-8 in the National Electrical Code). This will prevent tripping.



Steam Generator Schematic Diagram

Figure 18